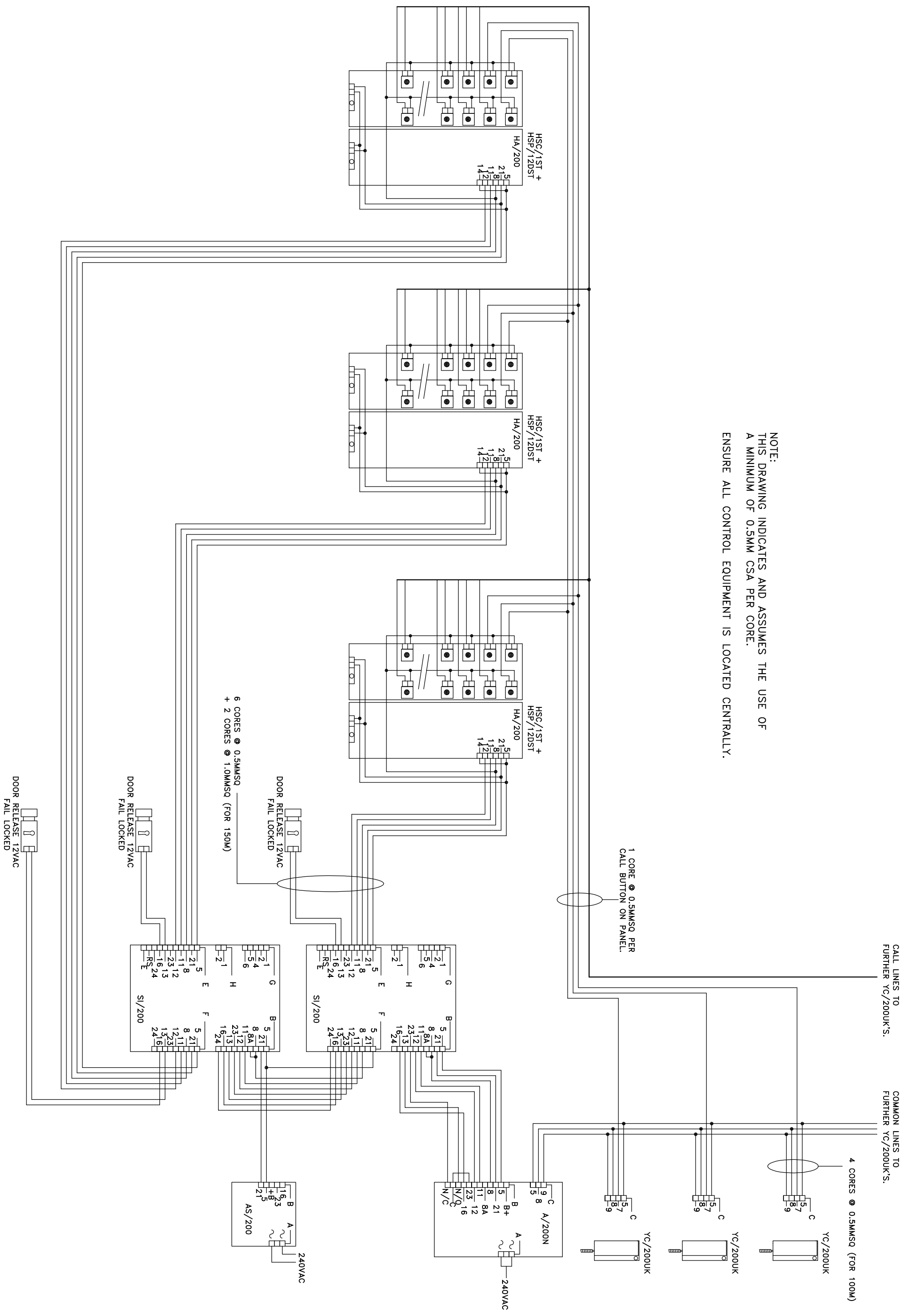


NOTE:
THIS DRAWING INDICATES AND ASSUMES THE USE OF
A MINIMUM OF 0.5MM CSA PER CORE.
ENSURE ALL CONTROL EQUIPMENT IS LOCATED CENTRALLY.



CALL LINES TO
FURTHER YC/200UK'S.

COMMON LINES TO
FURTHER YC/200UK'S.

4 CORES @ 0.5MMSQ (FOR 100M)

YC/200UK

YC/200UK

YC/200UK

YC/200UK

YC/200UK

YC/200UK

YC/200UK

1 CORE @ 0.5MMSQ PER
CALL BUTTON ON PANEL.

YC/200UK

YC/200UK

YC/200UK

YC/200UK

YC/200UK

YC/200UK

YC/200UK

YC/200UK

YC/200UK

YC/200UK

YC/200UK

YC/200UK

YC/200UK

YC/200UK

YC/200UK

YC/200UK

YC/200UK

YC/200UK

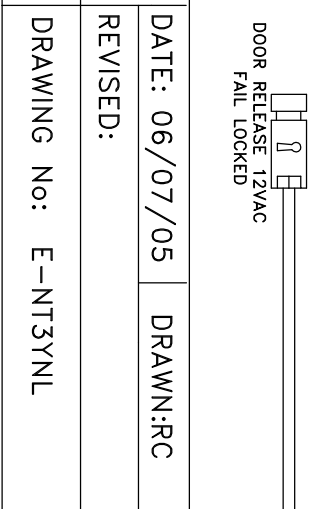
YC/200UK

YC/200UK

YC/200UK

YC/200UK

YC/200UK



BPT (UK) LTD. HERTS. ENGLAND	PREPARED FOR	DATE: 06/07/05	DRAWN:RC
	INSTALLER INFORMATION	REVISED:	
DRAWING TITLE:	MULTI-FLAT INSTALLATION USING 3 TARGHA	DRAWING No.: E-NT3YNL	
	AUDIO ENTRY PANELS		